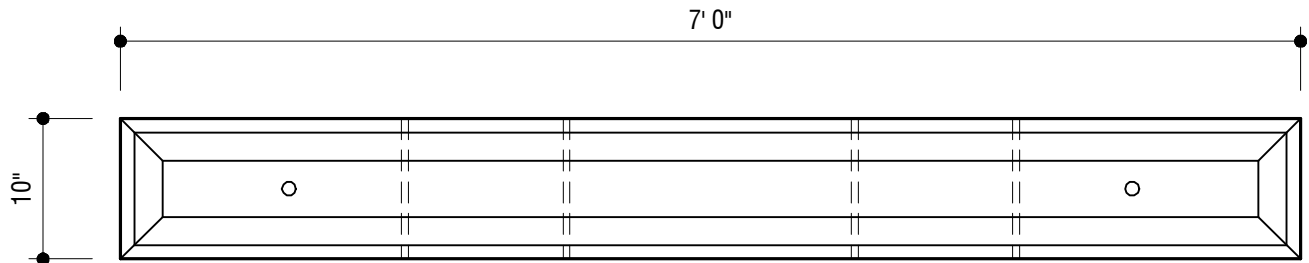
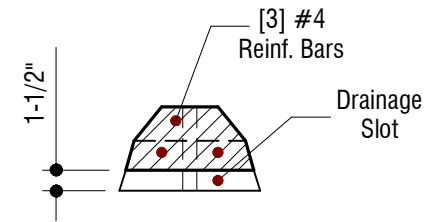


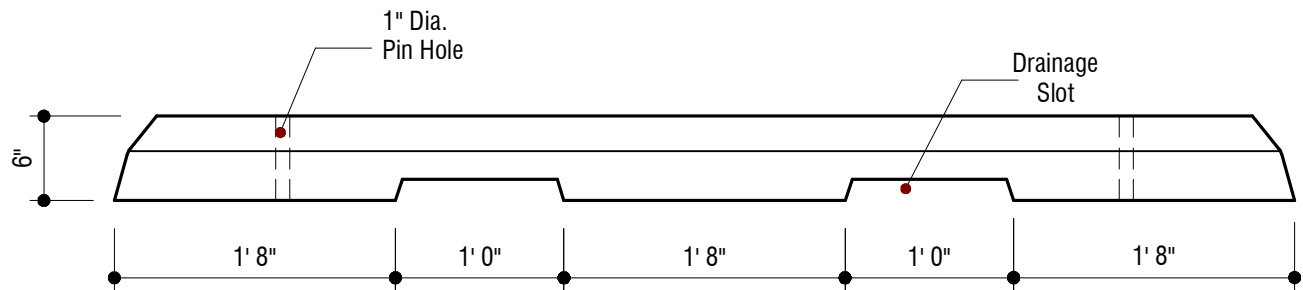
COMPLIES WITH:
SHA MD-634.04 & 725.01



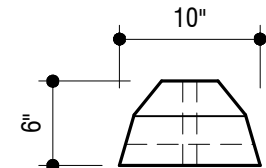
PLAN VIEW



SECTION



FRONT ELEVATION



SIDE ELEVATION



6264 Race Road
Elkridge, Maryland 21075
Tel. 410.796.1434
Fax. 410.796.1438
www.mayerbrosprecast.com

**Standard Duty Wheelstops
[7'-0" Long]
Stock Item**

Dwg.# WS-CAR7

No Scale

Jan. 1, 2000

DESIGN DATA & GENERAL NOTES

- [1] Concrete strength $f_c = 4,000$ p.s.i. @ 28 days. Density = 150 pcf.
- [2] Cement - Portland Type I/II per ASTM C 150-92.
- [3] Admixtures per ASTM C 260-86 & C 494-92.
- [4] Reinforcing per ASTM A615, Grade 60, domestic. Min 1" cover.
- [5] Smooth steel form finish